

OVERHOFF RADIATION OVERVIEW (ORO)

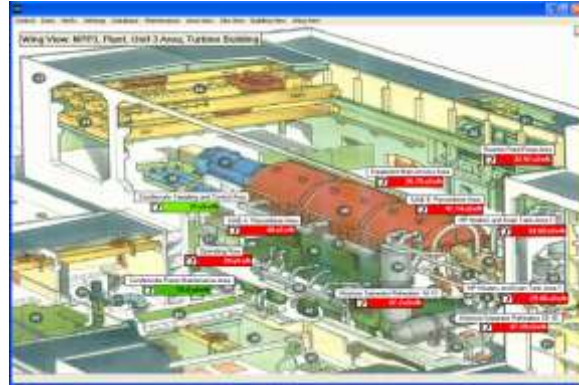
SOFTWARE, INSTRUMENTS, AND HARDWARE FOR ALL REMOTE MONITORING NEEDS

Overhoff 辐射监测软件ORO ; 所有远程监测软件, 设备及硬件

Map the facility in a series of views linking multiple instruments and readings from a variety of areas to the facility mainframe and/or individually in each area including the perimeter.

设施内各种视图绘图, 连接不同区域与总系统多点设备及读数或每个区域包括周边单独连接起来。

- Area / Room 区域/房间
- Site 现场
- Building / Wing 建筑物
- Floor 地板
- Sub-room 次房间
- Perimeter 参数



Each View Can Contain Multiple Sub-Views. Any View Can Have a Static or Live Cam View.

每个视图包括多层次视图, 每个视点可静态视图或实时摄像

Overhoff OverView Reports Can Include:

Overhoff监测软件报告包括 :

- Peak Data Values
峰值数据
- Dead Instruments
故障设备
- Alarms
报警
- Upward Trends
上升趋势
- Downward Trends
下降趋势
- Maintenance Schedules
设备维护时间表

Inside your facility you need real-time monitoring:

设施内实时监测

- Differential pressure on containment boxes and rooms
机箱与房间压差
- Linear feet per minute air velocity on open front hoods
开放式排风罩内线性空气速度英尺/分钟
- Gamma and neutron radiation levels
伽马和中子辐射水平
- Airborne radioactivity levels
气溶胶辐射水平
- Stationary contamination monitor alarms
固定式污染监测报警
- Temperature and humidity in the facility
设施内温度与湿度
- Status of security doors
安全门状态
- Ground water H-3 levels
地表水H3水平



TECHNICAL ASSOCIATES
OVERHOFF TECHNOLOGY

Divisions of



US NUCLEAR CORP

Ticker UCLE

7051 Eton Ave., Canoga Park, CA 91303
818-883-7043 (Phone) 818-883-6103 (Fax)

tagold@nwc.net

WWW.TECH-ASSOCIATES.COM

OVERHOFF RADIATION OVERVIEW (ORO)

SOFTWARE, INSTRUMENTS, AND HARDWARE FOR ALL REMOTE MONITORING NEEDS

Overhoff 辐射监测软件ORO ; 所有远程监测软件, 设备及硬件

At the perimeter of your facility you need real-time monitoring:

设施周边需要实时监测 :

- Gamma and neutron radiation levels 伽马中子辐射水平
- Airborne radioactivity levels 气溶胶水平
- Temperature and humidity 温度与湿度
- Barometric pressure 气压
- Wind speed and direction 风速和方向
- Status of security gates 安全门状态
- Liquid effluent rad data 液态排放物辐射数据



Nuclear power plant and perimeter monitoring 24/7 365 days with the Overhoff Radiation Overview (ORO) Network Monitoring System

使用 ORO 网络软件监测系统, 365 天每日监测核电站及周边

- Technical Associates and Overhoff Technology provide state-of-the-art radiation monitoring instruments for real-time monitoring.
TA公司和Overhoff提供顶级实时辐射监测设备
- Network legacy and newer instruments with the Overhoff Radiation Overview (ORO) comprehensive remote monitoring system.
遗留网络和配备ORO远程监测系统的先进设备
- Network to the facility mainframe of any instrument with a communication port or added serial ports: RS232, RS485, USB or Ethernet.
与用户主系统网通过通讯接口或串口RS232, RS485, USB 或局域网连接.
- Tracking and trending of data along with predictive analysis with Overhoff Radiation Overview (ORO) ensures that your radiation monitoring program remains in up to date.

OVERHOFF的ORO预测分析软件对数据进行跟踪与预测使您的辐射监测设备处于领先水平

The Overhoff Radiation Overview (ORO) creates links between instruments in different locations with individual building mainframes and with the facility mainframe providing a cohesive and integrated network of the entire nuclear power plant's radiation measurement, monitoring, and detection system.

Overhoff公司ORO软件将不同区域设备与各个建筑内主机及设施内主系统连接起来, 对整个核电站辐射监测、测量、检测系统进行整合。

- Model your facility graphically in a series of views. 对整个设施进行各种视图
- **OverView** accepts data from networked instruments (Ethernet, RS485, RS232) and hand-held survey monitors measuring Alpha, Beta, Gamma, Tritium,



TECHNICAL ASSOCIATES
OVERHOFF TECHNOLOGY

Divisions of



US NUCLEAR CORP

Ticker UCLE

7051 Eton Ave., Canoga Park, CA 91303
818-883-7043 (Phone) 818-883-6103 (Fax)

tagold@nwc.net

WWW.TECH-ASSOCIATES.COM

OVERHOFF RADIATION OVERVIEW (ORO)

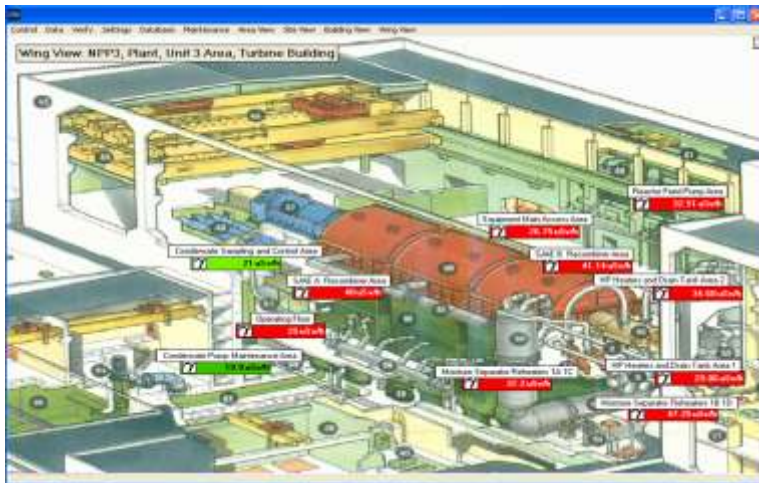
SOFTWARE, INSTRUMENTS, AND HARDWARE FOR ALL REMOTE MONITORING NEEDS

Overhoff 辐射监测软件ORO ; 所有远程监测软件, 设备及硬件

Temperature, and Humidity.

ORO软件接受网络内设备及测量阿尔法, 贝塔, 伽马, 氡便携式巡测仪传出的数据, 以及温度和湿度

- Displays radiation data in table and graphical form (summary and real-time).
以图表及表格形式显示辐射数据 (总结和实时数据)
- Stores all data to a database (Microsoft Access) at user-definable intervals.
以用户设定时间储存数据到数据库
- Performs real-time limit checking with user-definable limit values.
根据用户设定实时检查限值
- Displays over limit / alarm status to security personnel at a terminal.
向终端安检人员显示过限值/报警
- Generates reports: shift, daily, weekly, monthly, and user-definable intervals.
生成报告: 按每班, 每周, 每月, 或用户设定区间
- Identifies upward or downward trends in data.
识别数据上升或下降趋势
- Detects "dead" instruments.
检查未工作设备
- Tracks maintenance due on instruments.
记录设备维护信息
- Displays video images from webcams.
摄像头显示影像
- Works with Overhoff and Technical Associates Instruments and support can be easily extended to other manufacturers' instruments.
与所有Overhoff和TA设备兼容, 也易于与其它厂家设备兼容
- Low cost and scalable. 低成本可升级



TECHNICAL ASSOCIATES
OVERHOFF TECHNOLOGY

Divisions of



US NUCLEAR CORP

Ticker UCLE

7051 Eton Ave., Canoga Park, CA 91303
818-883-7043 (Phone) 818-883-6103 (Fax)

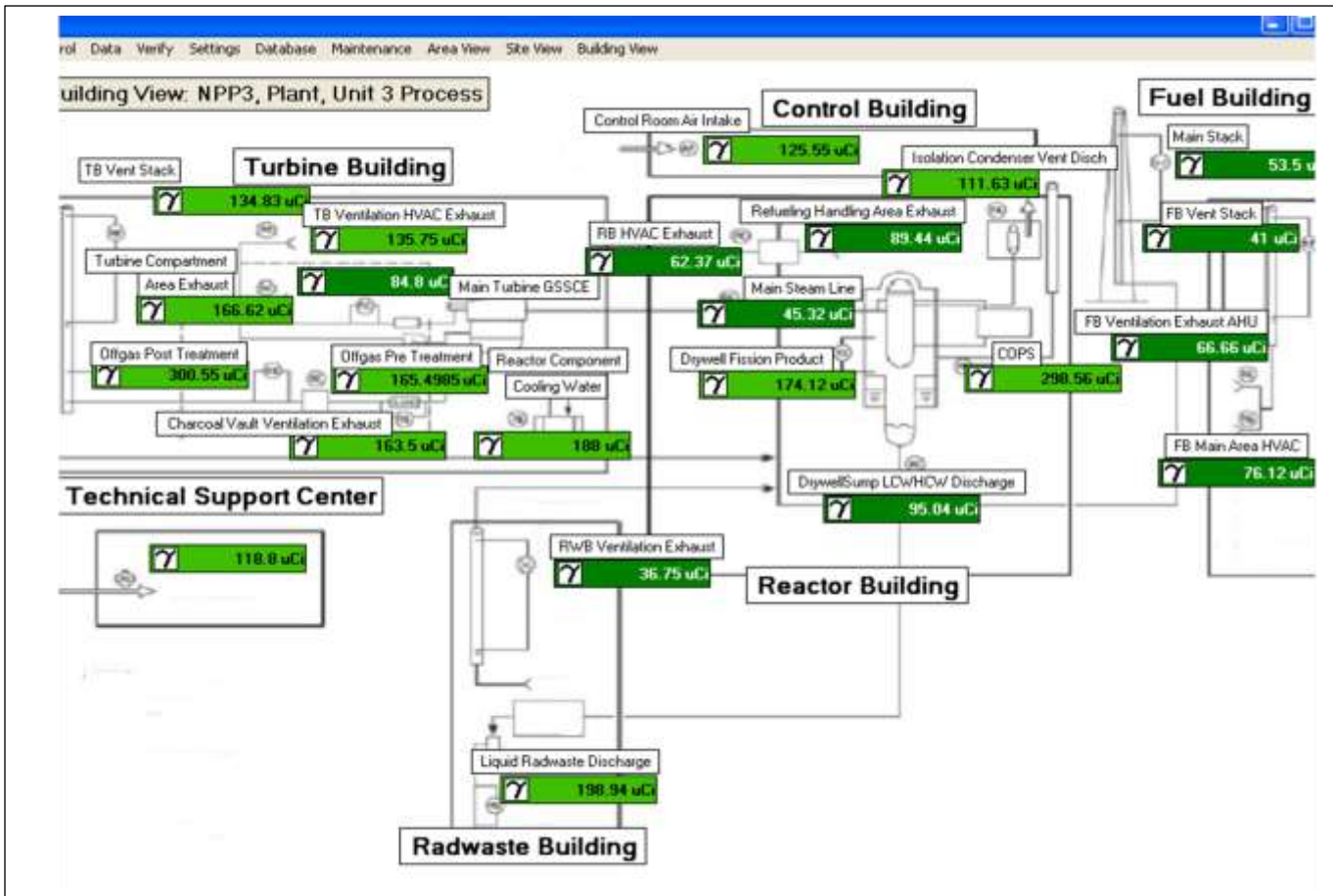
tagold@nwc.net

WWW.TECH-ASSOCIATES.COM

OVERHOFF RADIATION OVERVIEW (ORO)

SOFTWARE, INSTRUMENTS, AND HARDWARE
FOR ALL REMOTE MONITORING NEEDS

Overhoff 辐射监测软件ORO ; 所有远程监测软件, 设备及硬件



Other security monitoring can be applied to train stations, subway stations, sports stadiums, government facilities etc. with the Overhoff Radiation Overview (ORO).

OverhoffORO软件可应用到其它安全监测场所如火车站, 地铁, 体育馆及政府部门等



TECHNICAL ASSOCIATES
OVERHOFF TECHNOLOGY

Divisions of



US NUCLEAR CORP

Ticker UCLE

7051 Eton Ave., Canoga Park, CA 91303
818-883-7043 (Phone) 818-883-6103 (Fax)

tagold@nwc.net

WWW.TECH-ASSOCIATES.COM