

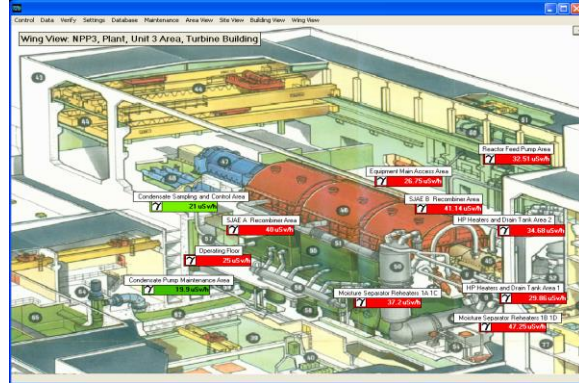
OVERHOFF RADIATION OVERVIEW (ORO)

SOFTWARE, INSTRUMENTS, AND HARDWARE FOR ALL REMOTE MONITORING NEEDS

Map the facility in a series of views linking multiple instruments and readings from a variety of areas to the facility mainframe and/or individually in each area including the perimeter.

- Area / Room
- Site
- Building / Wing
- Floor
- Subroom
- Perimeter

Each View Can Contain Multiple Sub-Views



Overhoff OverView Reports Can Include:

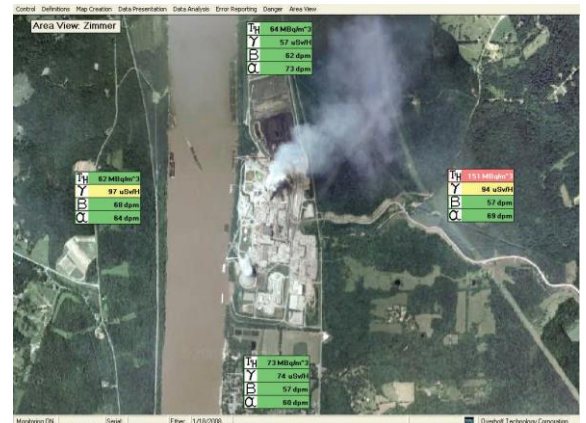
- Peak Data Values
- Dead Instruments
- Alarms
- Upward Trends
- Downward Trends
- Maintenance Schedules

Inside your facility you need real-time monitoring:

- Differential pressure on containment boxes and rooms
- Linear feet per minute air velocity on open front hoods
- Gamma and neutron radiation levels
- Airborne radioactivity levels
- Stationary contamination monitor alarms
- Temperature and humidity in the facility
- Status of security doors
- Ground water H-3 levels

At the perimeter of your facility you need real-time monitoring:

- Gamma and neutron radiation levels
- Airborne radioactivity levels
- Temperature and humidity
- Barometric pressure
- Wind speed and direction
- Status of security gates
- Liquid effluent rad data



Nuclear power plant and perimeter monitoring 24/7 365 days with the
Overhoff Radiation Overview (ORO) Network Monitoring System



TECHNICAL ASSOCIATES
OVERHOFF TECHNOLOGY

Divisions of



US NUCLEAR CORP

Ticker UCLE

7051 Eton Ave., Canoga Park, CA 91303
818-883-7043 (Phone) 818-883-6103 (Fax)

tagold@nwc.net

WWW.TECH-ASSOCIATES.COM

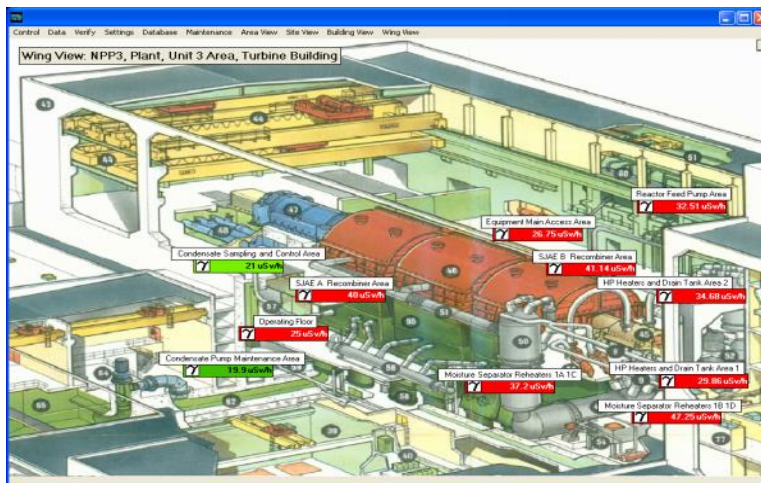
OVERHOFF RADIATION OVERVIEW (ORO)

SOFTWARE, INSTRUMENTS, AND HARDWARE FOR ALL REMOTE MONITORING NEEDS

- Technical Associates and Overhoff Technology provide state-of-the-art radiation monitoring instruments for real-time monitoring.
- Network legacy and newer instruments with the Overhoff Radiation Overview (ORO) comprehensive remote monitoring system.
- Network to the facility mainframe of any instrument with a communication port or added serial ports: RS232, RS485, USB or Ethernet.
- Tracking and trending of data along with predictive analysis with Overhoff Radiation Overview (ORO) ensures that your radiation monitoring program remains in up to date.

The Overhoff Radiation Overview (ORO) creates links between instruments in different locations with individual building mainframes and with the facility mainframe providing a cohesive and integrated network of the entire nuclear power plant's radiation measurement, monitoring, and detection system.

- Model your facility graphically in a series of views.
- **OverView** accepts data from networked instruments (Ethernet, RS485, RS232) and hand-held survey monitors measuring Alpha, Beta, Gamma, Tritium, Temperature, and Humidity.
- Displays radiation data in table and graphical form (summary and real-time).
- Stores all data to a database (Microsoft Access) at user-definable intervals.
- Performs real-time limit checking with user-definable limit values.
- Displays over limit / alarm status to security personnel at a terminal.
- Generates reports: shift, daily, weekly, monthly, and user-definable intervals.
- Identifies upward or downward trends in data.
- Detects "dead" instruments.
- Tracks maintenance due on instruments.
- Displays video images from webcams.
- Works with Overhoff and Technical Associates Instruments and support can be easily extended to other manufacturers' instruments.
- Low cost and scalable.



TECHNICAL ASSOCIATES
OVERHOFF TECHNOLOGY

Divisions of



US NUCLEAR CORP

Ticker UCLE

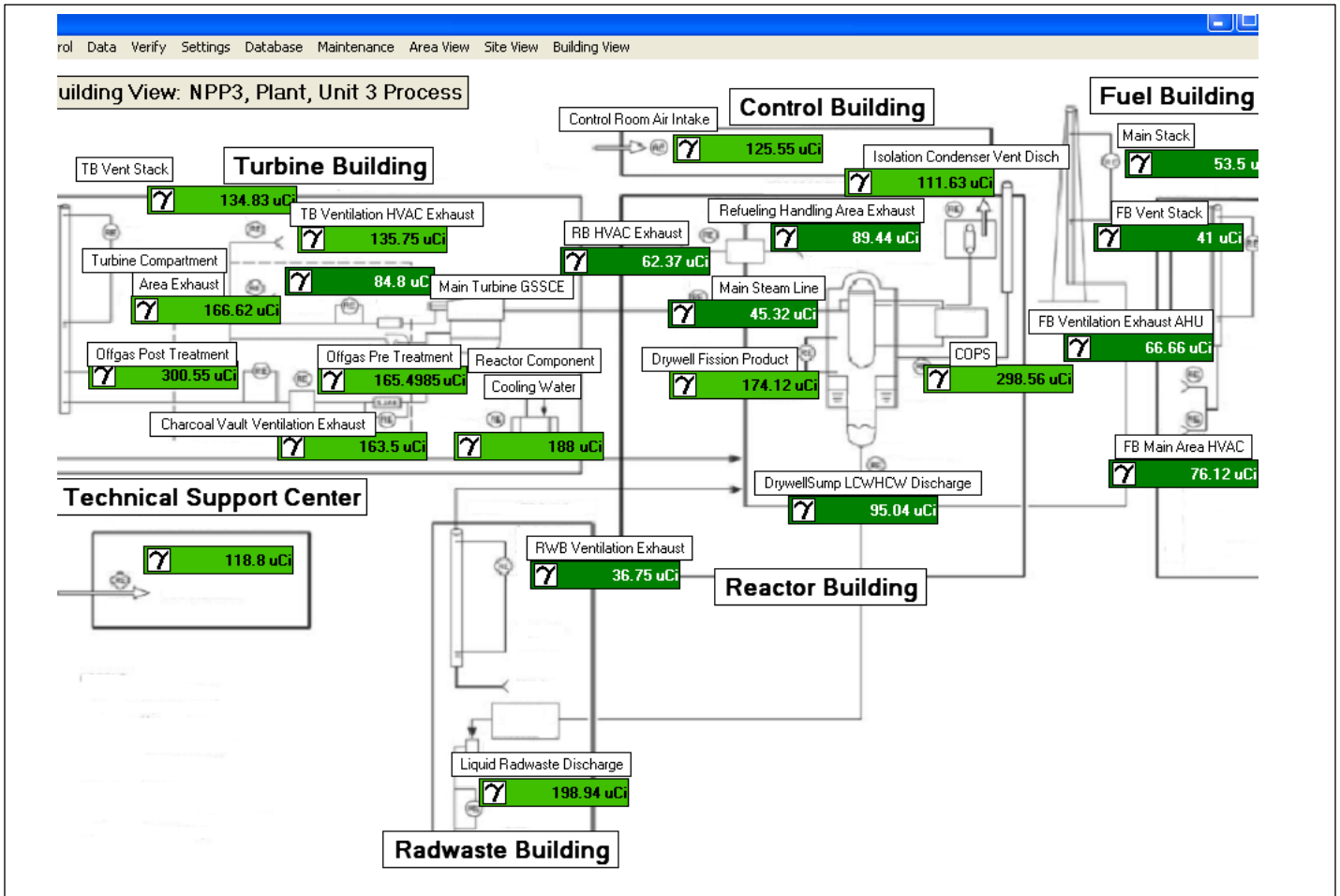
7051 Eton Ave., Canoga Park, CA 91303
818-883-7043 (Phone) 818-883-6103 (Fax)

tagold@nwc.net

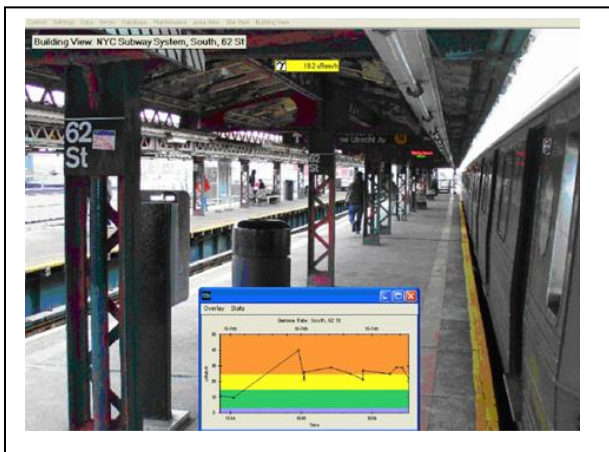
WWW.TECH-ASSOCIATES.COM

OVERHOFF RADIATION OVERVIEW (ORO)

SOFTWARE, INSTRUMENTS, AND HARDWARE
FOR ALL REMOTE MONITORING NEEDS



Other security monitoring can be applied to train stations, subway stations, sports stadiums, government facilities etc. with the Overhoff Radiation Overview (ORO).



TECHNICAL ASSOCIATES
OVERHOFF TECHNOLOGY

Divisions of



US NUCLEAR CORP

Ticker UCLE

7051 Eton Ave., Canoga Park, CA 91303
818-883-7043 (Phone) 818-883-6103 (Fax)

tagold@nwc.net

WWW.TECH-ASSOCIATES.COM