

STRAP-ON PIPE RADIATION MONITOR

Model Series~ PEMO-7

PEMO-7 ~ PEMO-7-MCA ~ PEMO-7-G

FEATURES:

- INSTALLS ANYTIME ANYWHERE
- SENSITIVITY INDEPENDANT OF FLOW RATE
- NO PENETRATION, NO DOWNTIME
- SENSITIVITY: $1 \times 10^{-7} \mu\text{Ci/cc } ^{60}\text{Co}$ in 18" pipe
- REAL TIME ALARM
- RATE & INTEGRATED EXPOSURE
- DETECTOR TYPE CHOICE: NaI (Tl) or HPGe
- USB & ETHERNET PORTS
- ON BOARD DATA ARCHIVE, TRANSMIT, & DISPLAY



APPLICATION:

The **PEMO-7** Pipe Monitor assures accurate detection and quick alarm in case of waterborne radioactivity contamination flowing thru one or more pipes. A constant check with alarm and data record is accomplished by the onboard computer. Integrated exposure information is recorded and can provide a hard copy via external printer. It is a complete system and may be expanded per need with modules of the FM-9 series.

The **PEMO-7** is sensitive and versatile. It may be used to monitor water in pipes or effluent streams down to EPA levels.

DESCRIPTION:

The **PEMO-7** uses standard NaI (Tl) Detector in T/A's unique Strap-On Style Shield to continuously measure any water or airborne gamma emitting Radioactive contaminants, onboard data logging. The water or air stream is under constant surveillance via a scintillation detector. The unit is completely self-contained.

The **PEMO-7** utilizes a NaI (Tl) scintillation crystal detector.

The **PEMO-7-MCA** utilizes a NaI (Tl) scintillation crystal detector.

The **PEMO-7-G** utilizes an intrinsic HPGe solid state detector.

NOTE FOR SELECTION OF INTRINSIC HPGe DETECTOR ~ PEMO-7-G:

The **PEMO-7-G** System has an installed Dewar to maintain HPGe crystal at proper temperature range.

OPTIONAL: An electronic cryo-cooler is available.



TECHNICAL ASSOCIATES
OVERHOFF TECHNOLOGY

7051 Eton Ave., Canoga Park, CA 91303
818-883-7043 (Phone) 818-883-6103 (Fax)

tagold@nwc.net

WWW.TECH-ASSOCIATES.COM

Divisions of  US NUCLEAR CORP

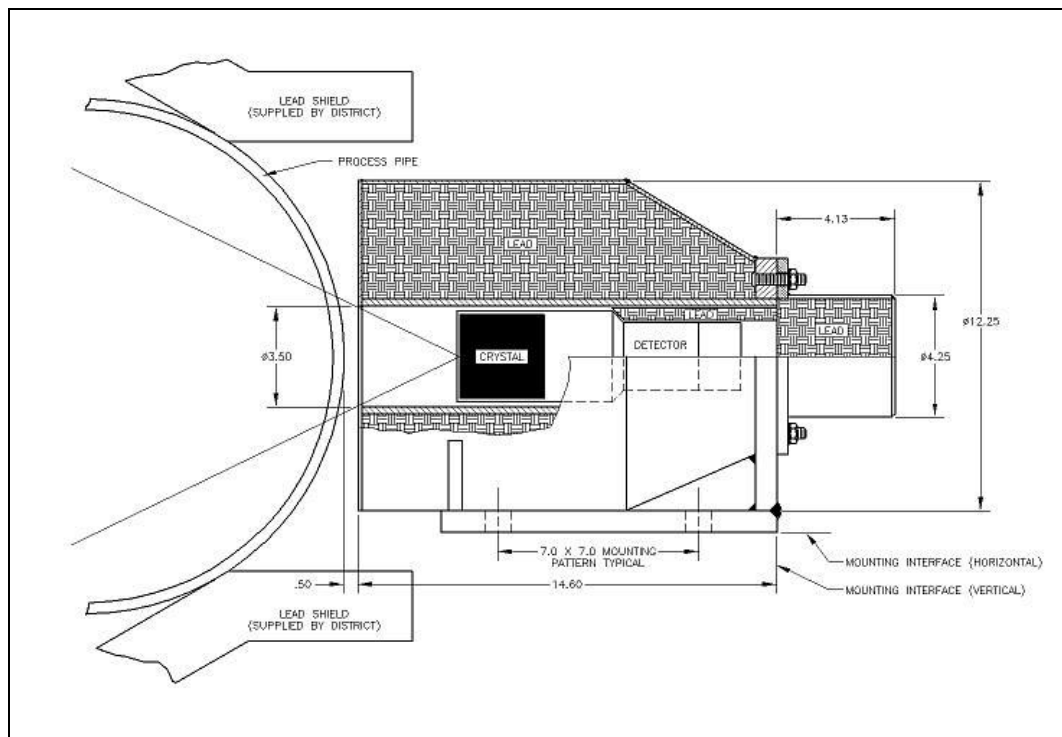
STRAP-ON PIPE RADIATION MONITOR

Model Series~ PEMO-7

PEMO-7 ~ PEMO-7-MCA ~ PEMO-7-G



ELECTRONICS
Model FM-9W



PEMO-7
Installation Diagram



TECHNICAL ASSOCIATES
OVERHOFF TECHNOLOGY

Divisions of  US NUCLEAR CORP

7051 Eton Ave., Canoga Park, CA 91303
818-883-7043 (Phone) 818-883-6103 (Fax)

tagold@nwc.net

WWW.TECH-ASSOCIATES.COM

STRAP-ON PIPE RADIATION MONITOR

Model Series~ PEMO-7

PEMO-7 ~ PEMO-7-MCA ~ PEMO-7-G

SPECIFICATIONS:

Sensitivity:

Sensitivity and response time depend on user's requirements and physical circumstances such as pipe diameter, wall thickness, and ambient background radiation level and energy (KeV) of major nuclides of interest.

Example: The standard system with 3" x 3" NaI detector and 2" of lead shielding has a limit of sensitivity better than 1×10^{-7} Ci/cc of ^{60}Co in an 18" diameter pipe with 0.02 mR/hr background in a one hour measurement.

DETECTORS:

PEMO-7 & PEMO-7-MCA 3" x 3" NaI (TI) crystal scintillation detector probe, Model PGS-3X3T (typically one per pipe) with sensitivity to all Gamma above 100 KeV.

PEMO-7-G: Intrinsic HPGe Solid State Detector

ELECTRONICS:

- Engineering Units:** User can input correct conversion factor and change to any units.
- Controls: Front Panel:** On-Off, Alarm-mute, Rate, Integrate, Reset.
- Recessed or Internal:** Discriminator level, high voltage. Other adjustable settings: See calibration.
- Input Sensitivity:** Adjustable from less than 1 millivolt to 100 millivolt
Anti-saturation and Dead-time Corrections are available.
- Alarm:** 2000 Hz audio tone with audio "mute" switch + RED LIGHT
High current relay. 0-100% of full scale.
- Alarm Set Point:** User settable to any point on detector range.
- Serial Output:** Two way USB standard, Ethernet optional.
- Power:** 105-125 volts, 50-60 Hz (220 V optional)
- OPTIONAL:** Software package for integration into facility computer & to link multiple detectors.

ELECTRONICS DIMENSIONS & WEIGHT:

21" W X 11" H X 16" D

20 pounds (9 kg)

MODEL	ENERGY ANALYZER	DETECTOR	SMART ELECTRONICS	ANALYSIS OUTPUT	TEMPERATURE OPERATION
PEMO-7	Single Channel Analyzer (SCA)	3" x 3" NaI (TI)	FM-9W	Wide or Narrow Window	No Dewar Ambient Temperature Operation
PEMO-7-MCA	Multi-Channel Analyzer (MCA)	3" x 3" NaI (TI)	Full Computer	Isotope Identification Enhanced Display	No Dewar Ambient Temperature Operation
PEMO-7-G	Multi-Channel Analyzer (MCA)	HPGe Solid State	Full Computer	Isotope Identification Enhanced Display	Manual Dewar or Electronic Cryo-Cooler Cryogenic Temperature Operation



TECHNICAL ASSOCIATES
OVERHOFF TECHNOLOGY

Divisions of  US NUCLEAR CORP

7051 Eton Ave., Canoga Park, CA 91303
818-883-7043 (Phone) 818-883-6103 (Fax)

tagold@nwc.net

WWW.TECH-ASSOCIATES.COM

STRAP-ON PIPE RADIATION MONITOR

Model Series~ PEMO-7

PEMO-7 ~ PEMO-7-MCA ~ PEMO-7-G

Shielding:	0.25" to 3" low- activity-lead around detector.
Range - PEMO-7:	Example: 1×10^{-7} to 1×10^{-4} $\mu\text{Ci/cc}$ with 3" x 3" NaI (TI) & 18" Pipe.
Alarm:	User Settable. 2000 Hz beeper, red flasher and relay contacts for user.
Response Time:	Settable 1 second to 10 minutes.
Readout:	Color Monitor showing: concentration, total activity and programmed information.
Power:	115 V, 50-60 Hz (230 V optional).
Flow Rate:	Measurement is independent of Flow rate.
Sample Volume:	The pipe should be full of liquid for best sensitivity.
Case:	Electronics rack mounted or housed in enameled steel case.

WEIGHT & DIMENSIONS:

Detector Assembly Weight:	10 lbs for unshielded PEMO-7 assembly, up to 350 lbs for 2" thick lead shielding.
Shipping Weight:	450 lbs. for complete 1 detector PEMO-7 system, including detector light shielding. (weight will vary dependent on shield & detector selection)

NOTES FOR RADIATION MEASUREMENT WHEN DETECTOR IS OUTSIDE OF THE PIPE:

OBSTACLES IN OBTAINING GOOD EFFICIENCY AND HIGH SENSITIVITY WHEN MEASURING RADIOACTIVE ACTIVITY FROM THE OUTSIDE OF A PIPE.

1. Unknown volume if pipe is not always full.
2. Unknown list of nuclides & energies.
3. Pipe wall thickness and material, such as steel will absorb all Alphas & all Betas below 1 MeV, & Gammas below 100 KeV.
4. Geometry of measurement is poor because pipe presents only a small angle source to the probe crystal's view.

UNITS OF MEASUREMENT FOR PIPE MONITOR

The instrument can calculate & display any engineering units desired. But the user needs to input a valid calibration coefficient factor.

In the absence of a good calibration factor for the **PEMO-7**, read-out defaults to units in **cps** or can easily be set to read-out in **cpm** without calibration. Units of **mR/hr** can be set with minimum effort.

Instructions for Manual Input of Calibration Coefficient:

1. Fill the pipe full with a known concentration of the single nuclide of greatest interest or abundance.
2. Set energy window or area of interest to the major energy peak.
3. Record the count rate



TECHNICAL ASSOCIATES
OVERHOFF TECHNOLOGY

7051 Eton Ave., Canoga Park, CA 91303
818-883-7043 (Phone) 818-883-6103 (Fax)

tagold@nwc.net

Divisions of  US NUCLEAR CORP

WWW.TECH-ASSOCIATES.COM

STRAP-ON PIPE RADIATION MONITOR

Model Series~ PEMO-7

PEMO-7 ~ PEMO-7-MCA ~ PEMO-7-G

- Calculate calibration coefficient factor.

Calculation Formula:

Divide cps by Bq (Counts per second divided by disintegrations per second)

- Repeat procedure for the second most abundant nuclide.
- Use the factors that you have determined to calculate a weighted average factor which reflects the abundance of each important nuclide in the liquid mixture.
- Input the calibration factor as you follow the on-screen calibration instructions.
- The **PEMO-7** can then readout in concentration units such as $\mu\text{Ci/L}$ (microCuries per liter) or KBq/m^3 or as desired.

NOTE: Solid sources can be used to approximate the correct calibration factor for particular nuclides if pipe thickness is taken into account.

OPTIONAL SOFTWARE SCREEN SHOTS

<Actions> Technical Associates Pemo7

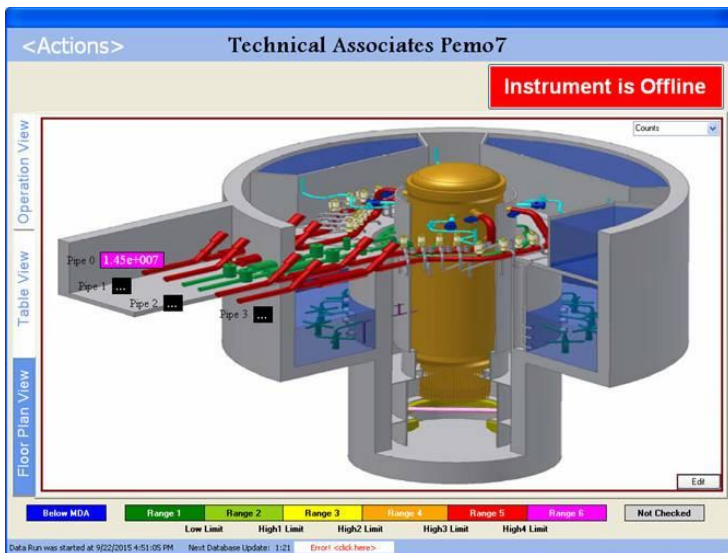
Instrument is Offline

Measurable Name	EUs	Units	Counts Per Second	EUs (2 min Average)	EUs (30 min Average)	EUs (8 hr Average)	EUs (24 hr Average)	Limit Level	Loss Of Signal
Pipe 0 Counts	1.45e+007	counts		1.44e+007	1.44e+007	1.35e+007	3.80e+007	6	<input type="checkbox"/>
Pipe 0 Count Rate	611	cps		617	617	617	430	6	<input type="checkbox"/>
Pipe 0 Dose Rate	611	mR/h		617	617	617	430	6	<input type="checkbox"/>
Pipe 0 Dose	1.45e+007	mR		1.44e+007	1.44e+007	1.35e+007	3.80e+007	6	<input type="checkbox"/>
Pipe 1 Counts		counts		0	0	0	0	0	<input checked="" type="checkbox"/>
Pipe 1 Count Rate		cps		0	0	0	0	0	<input checked="" type="checkbox"/>
Pipe 1 Dose Rate		mR/h		0	0	0	0	0	<input checked="" type="checkbox"/>
Pipe 1 Dose		mR		0	0	0	0	0	<input checked="" type="checkbox"/>
Pipe 2 Counts		counts		0	0	0	0	0	<input checked="" type="checkbox"/>
Pipe 2 Count Rate		cps		0	0	0	0	0	<input checked="" type="checkbox"/>
Pipe 2 Dose Rate		mR/h		0	0	0	0	0	<input checked="" type="checkbox"/>
Pipe 2 Dose		mR		0	0	0	0	0	<input checked="" type="checkbox"/>
Pipe 3 Counts		counts		0	0	0	0	0	<input checked="" type="checkbox"/>
Pipe 3 Count Rate		cps		0	0	0	0	0	<input checked="" type="checkbox"/>
Pipe 3 Dose Rate		mR/h		0	0	0	0	0	<input checked="" type="checkbox"/>
Pipe 3 Dose		mR		0	0	0	0	0	<input checked="" type="checkbox"/>

Below MDA Range 1 Range 2 Range 3 Range 4 Range 5 Range 6 Not Checked

Low Limit High1 Limit High2 Limit High3 Limit High4 Limit

Data Run was started at: 9/22/2015 4:51:05 PM Next Database Update: 1:44 Error click here>



<Actions> Technical Associates Pemo7

Instrument is Offline

Location:	Pipe 0	Pipe 1	Pipe 2	Pipe 3
Status:	OK	Offline	Offline	Offline
Total Counts:	1.45e+007
Counts Per Second:	611
Dose Rate:	611 mR/h	mR/h	mR/h	mR/h
Dose:	1.45e+007 mR	mR	mR	mR
Instrument Index:	0	1	2	3

Below MDA Range 1 Range 2 Range 3 Range 4 Range 5 Range 6 Not Checked

Low Limit High1 Limit High2 Limit High3 Limit High4 Limit

Data Run was started at: 9/22/2015 4:51:05 PM Next Database Update: 1:45 Error click here>



TECHNICAL ASSOCIATES
OVERHOFF TECHNOLOGY

Divisions of  US NUCLEAR CORP

7051 Eton Ave., Canoga Park, CA 91303
818-883-7043 (Phone) 818-883-6103 (Fax)

tagold@nwc.net

WWW.TECH-ASSOCIATES.COM